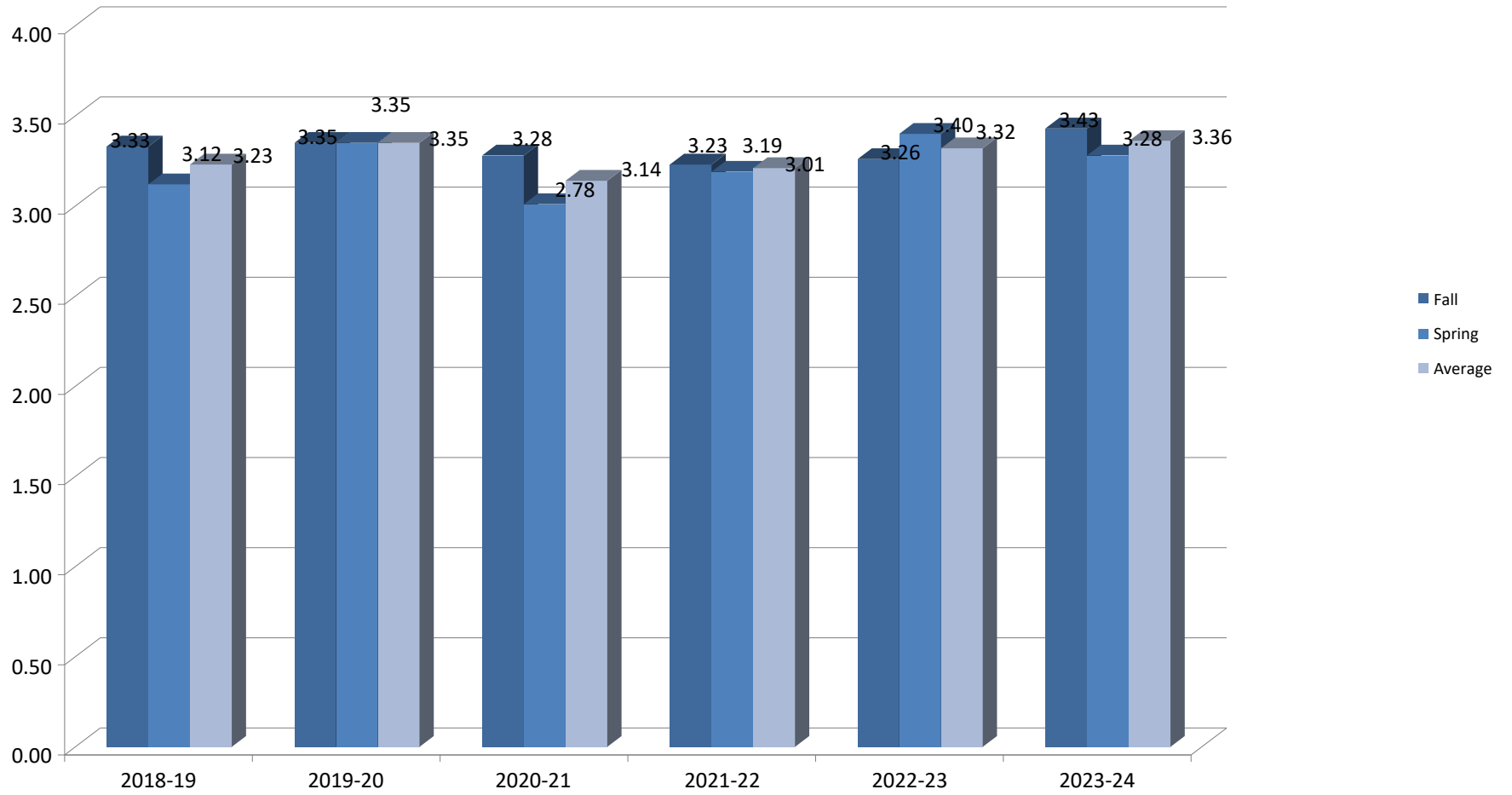


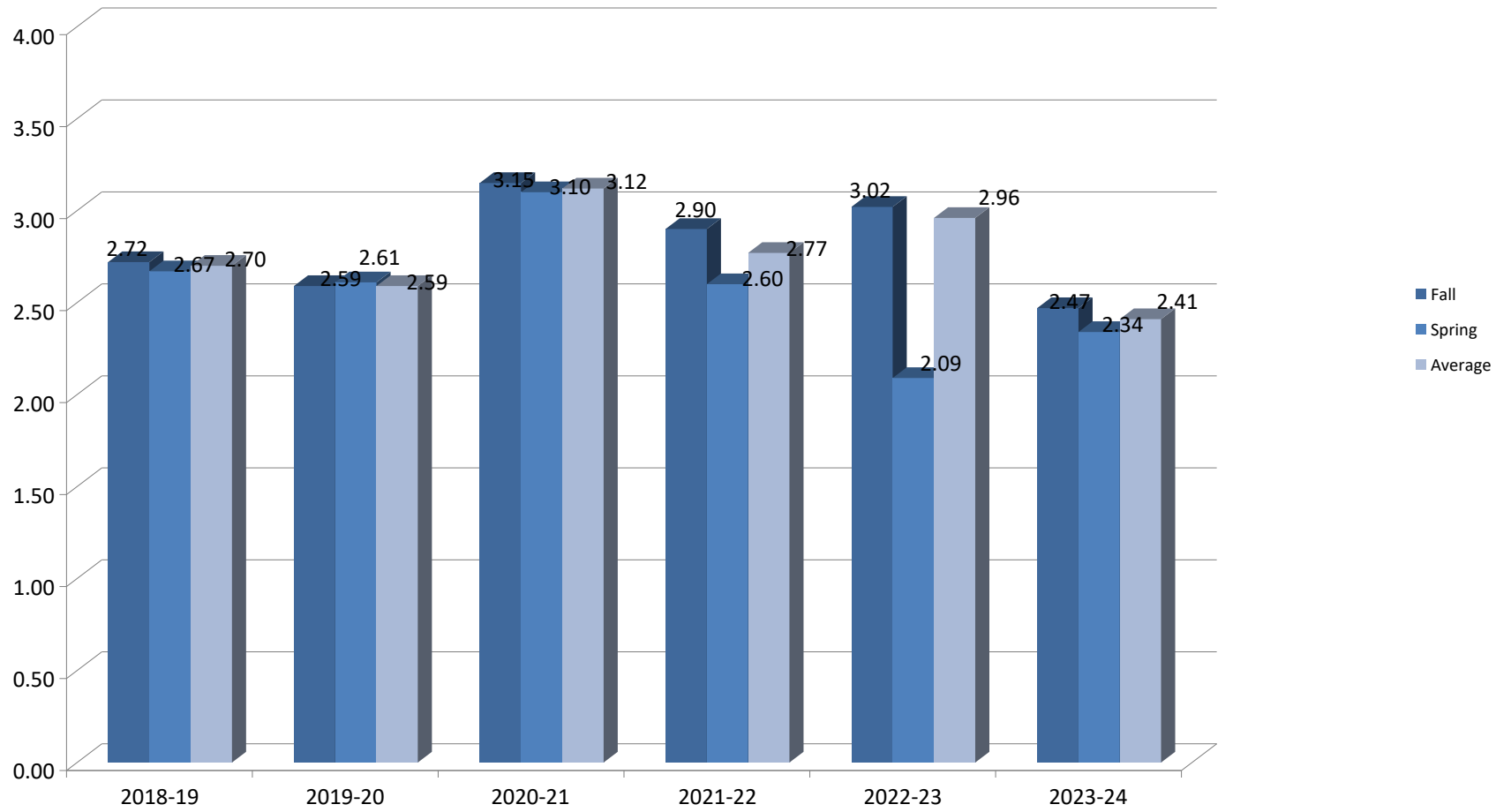
Baseball GPA



	Fall	Spring	Average
2018-19	3.33	3.12	3.23
2019-20	3.35	3.35	3.35
2020-21	3.28	3.01	3.14
2021-22	3.23	3.19	3.21
2022-23	3.26	3.40	3.32
2023-24	3.43	3.28	3.36

2005-06	3.12	3.03	3.07
2006-07	3.23	3.04	3.15
2007-08	3.24	3.32	3.28
2008-09	3.18	3.23	3.21
2009-10	3.27	3.10	3.18
2010-11	3.44	3.14	3.29
2011-12	3.31	3.28	3.29
2012-13	3.26	3.15	3.21
2013-14	3.24	3.29	3.26
2014-15	3.15	3.08	3.11
2015-16	3.24	3.10	3.18
2016-17	3.15	3.12	3.13
2017-18	3.10	2.99	3.05

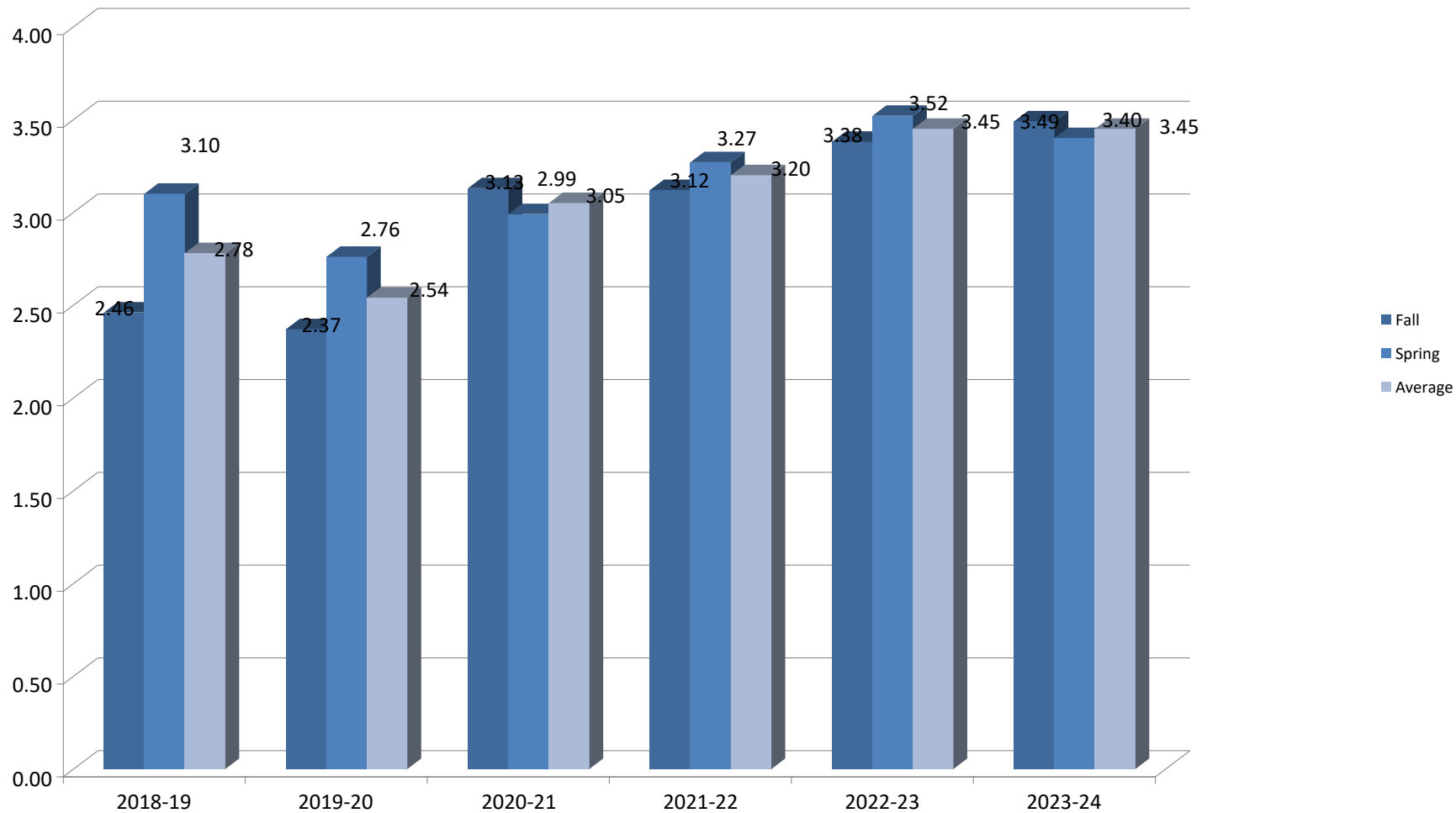
Men's Basketball GPA



	Fall	Spring	Average
2018-19	2.72	2.67	2.70
2019-20	2.59	2.61	2.59
2020-21	3.15	3.10	3.12
2021-22	2.90	2.60	2.77
2022-23	3.02	2.09	2.96
2023-24	2.47	2.34	2.41

2005-06	2.66	2.55	2.61
2006-07	2.68	3.02	2.79
2007-08	2.51	2.43	2.46
2008-09	2.79	2.85	2.80
2009-10	2.41	2.80	2.60
2010-11	2.75	2.76	2.75
2011-12	2.70	2.23	2.46
2012-13	2.57	3.00	2.76
2013-14	2.69	2.58	2.63
2014-15	2.71	2.59	2.65
2015-16	2.77	2.42	2.59
2016-17	2.49	2.32	2.40
2017-18	2.71	3.01	2.86

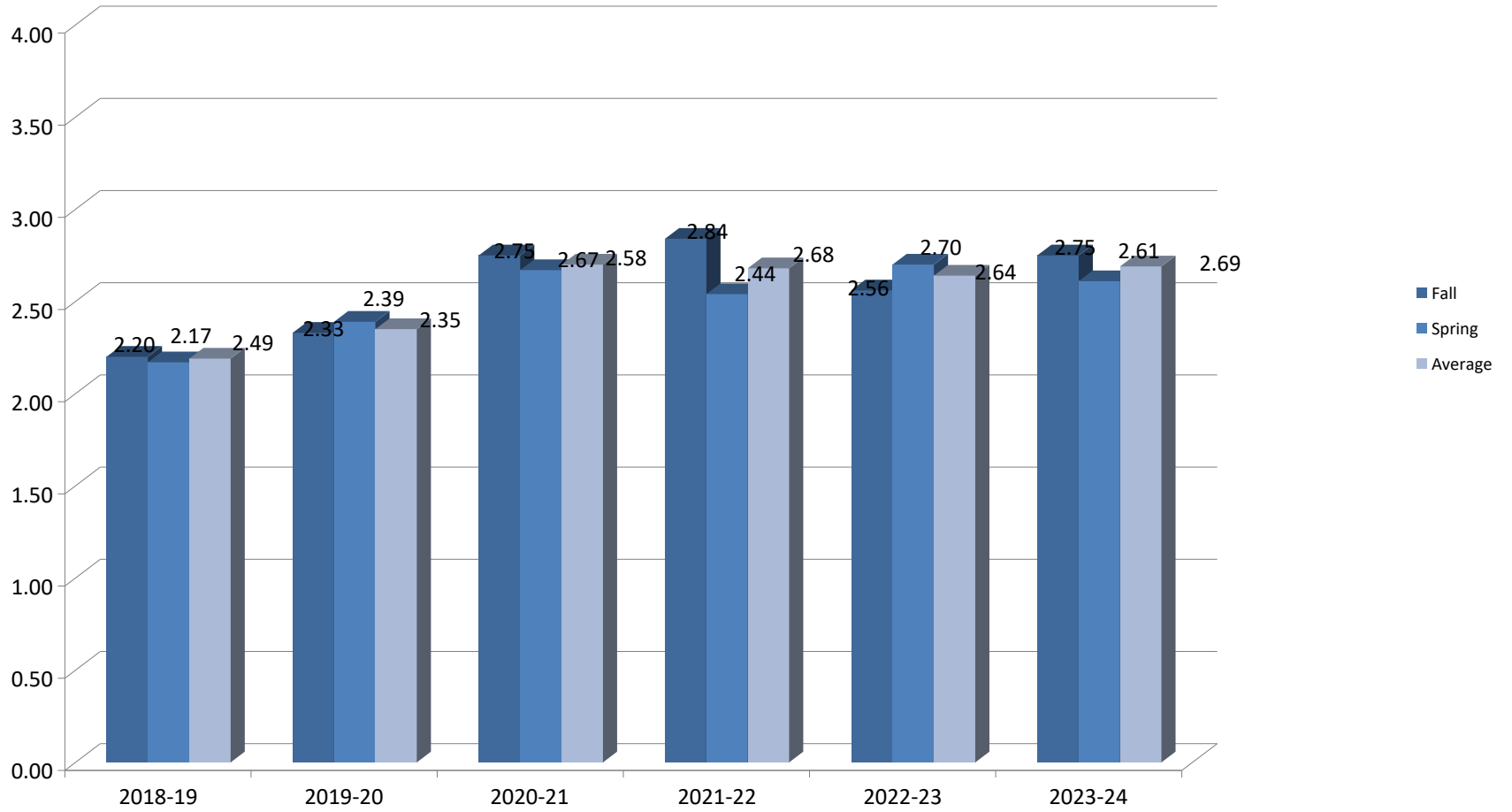
Women's Basketball GPA



	Fall	Spring	Average
2018-19	2.46	3.10	2.78
2019-20	2.37	2.76	2.54
2020-21	3.13	2.99	3.05
2021-22	3.12	3.27	3.20
2022-23	3.38	3.52	3.45
2023-24	3.49	3.40	3.45

2005-06	2.93	2.89	2.92
2006-07	3.24	3.19	3.21
2007-08	3.03	3.36	3.18
2008-09	3.43	3.40	3.41
2009-10	3.10	3.05	3.07
2010-11	3.11	3.00	2.94
2011-12	3.55	3.32	3.43
2012-13	3.27	2.97	3.11
2013-14	3.07	2.88	2.97
2014-15	2.73	2.81	2.77
2015-16	3.26	3.15	3.20
2016-17	2.87	2.77	2.82
2017-18	2.76	3.15	2.95

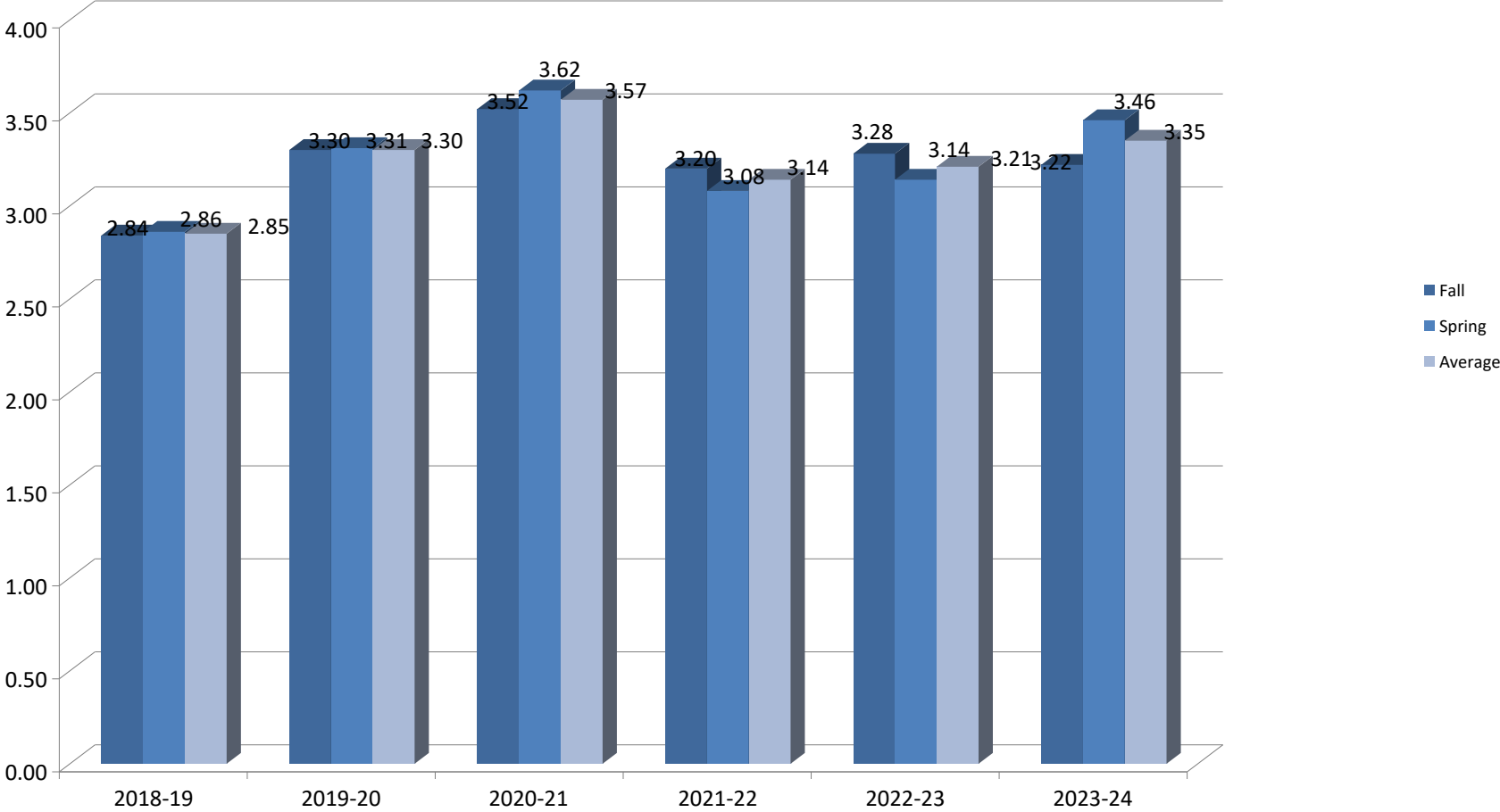
Football GPA



	Fall	Spring	Average
2018-19	2.20	2.17	2.19
2019-20	2.33	2.39	2.35
2020-21	2.75	2.67	2.70
2021-22	2.84	2.54	2.68
2022-23	2.56	2.70	2.64
2023-24	2.75	2.61	2.69

2012-13	2.54	2.55	2.54
2013-14	2.67	2.30	2.48
2014-15	2.77	2.65	2.71
2015-16	2.44	2.34	2.39
2016-17	2.46	2.46	2.46
2017-18	2.46	2.41	2.43

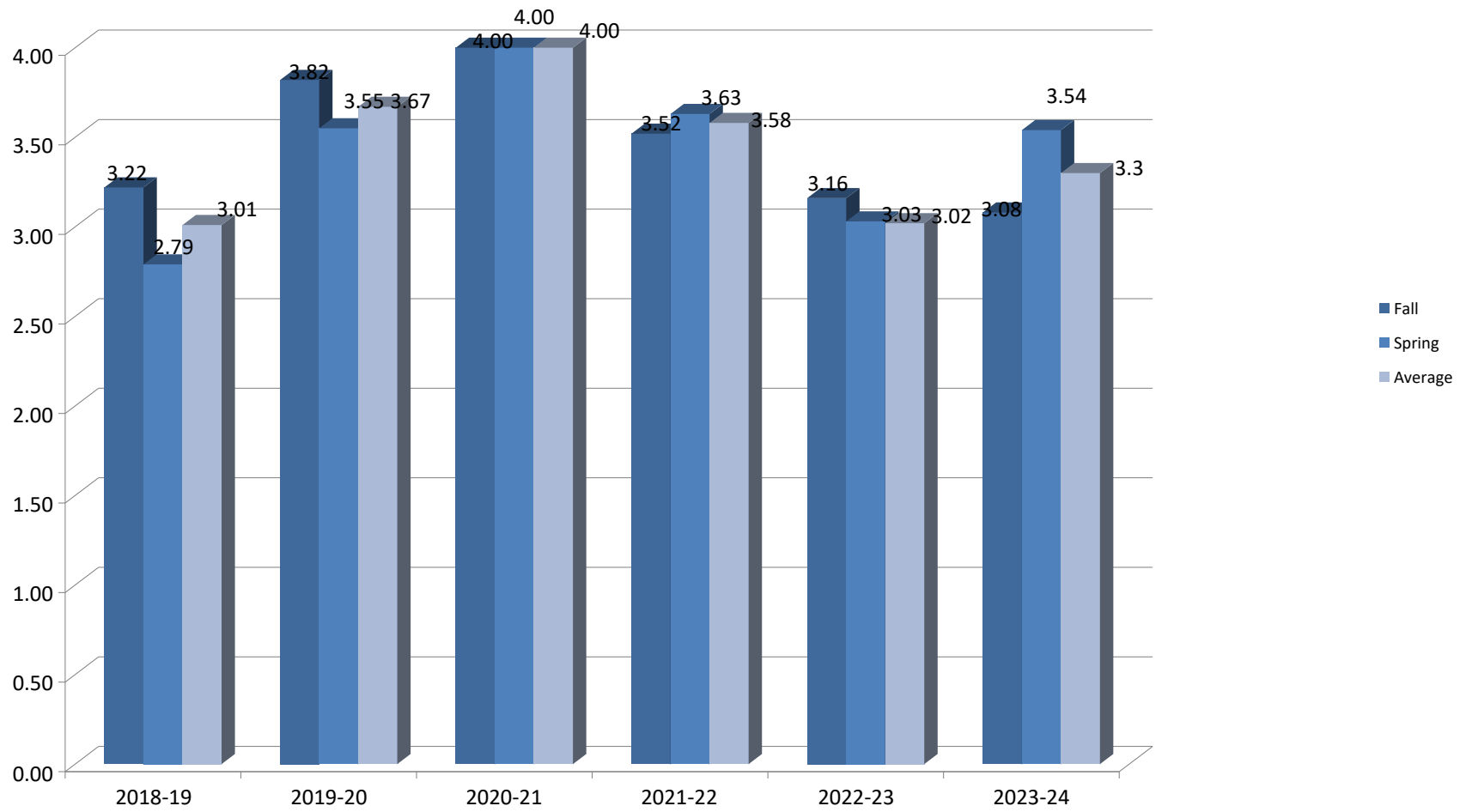
Men's Golf GPA



	Fall	Spring	Average
2018-19	2.84	2.86	2.85
2019-20	3.30	3.31	3.30
2020-21	3.52	3.62	3.57
2021-22	3.20	3.08	3.14
2022-23	3.28	3.14	3.21
2023-24	3.22	3.46	3.35

2012-13	2.99	3.10	3.04
2013-14	2.97	2.91	2.94
2014-15	2.98	2.91	2.94
2015-16	3.01	2.84	2.92
2016-17	3.11	3.01	3.06
2017-18	3.07	2.85	2.96

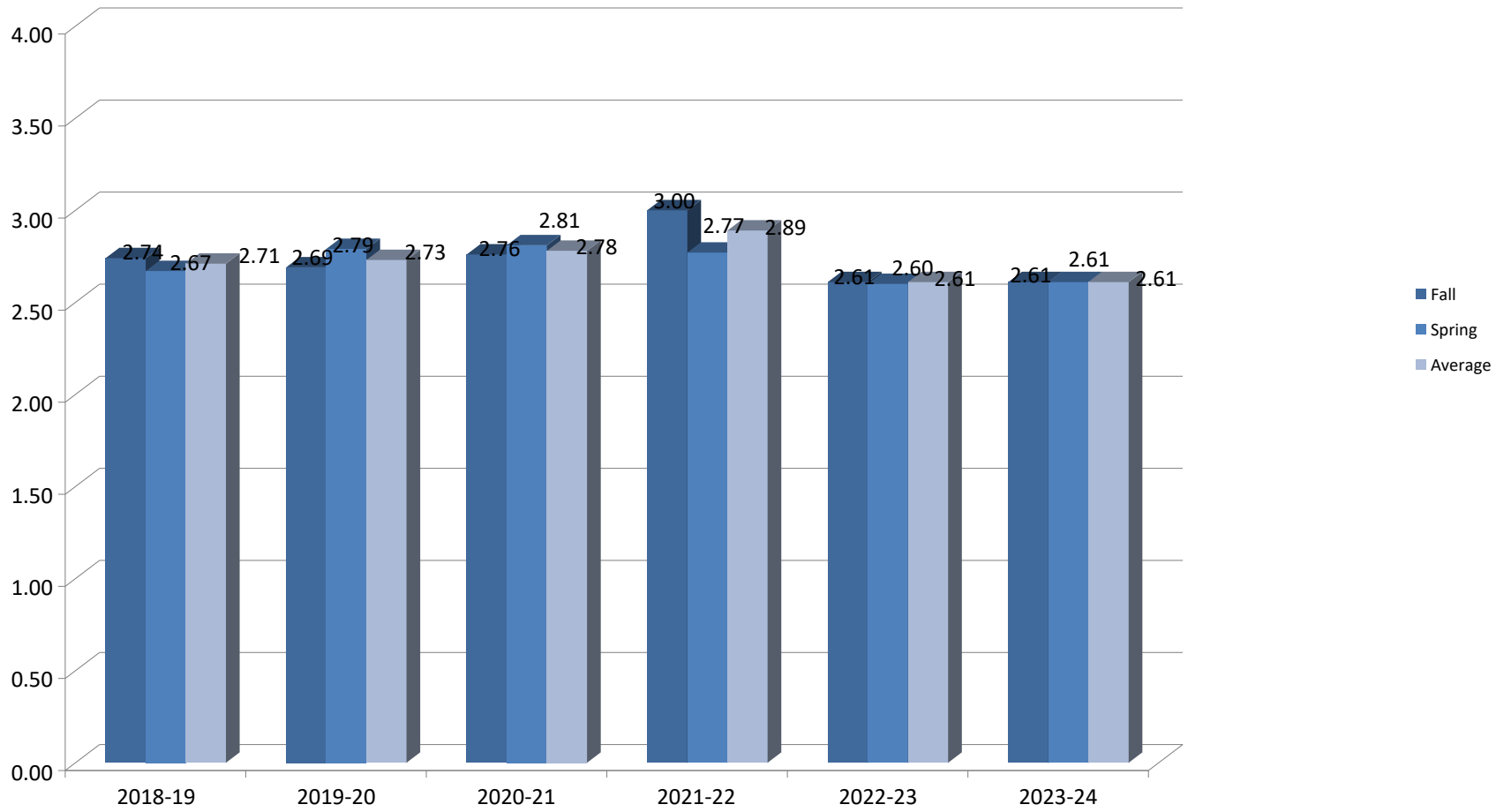
Women's Golf GPA



	Fall	Spring	Average
2018-19	3.22	2.79	3.01
2019-20	3.82	3.55	3.67
2020-21	4.00	4.00	4.00
2021-22	3.52	3.63	3.58
2022-23	3.16	3.03	3.02
2023-24	3.08	3.54	3.3

2012-13	3.40	3.51	3.45
2013-14	3.15	3.36	3.25
2014-15	3.26	3.30	3.28
2015-16	3.05	3.19	3.12
2016-17	3.02	2.62	2.82
2017-18	0	0	0

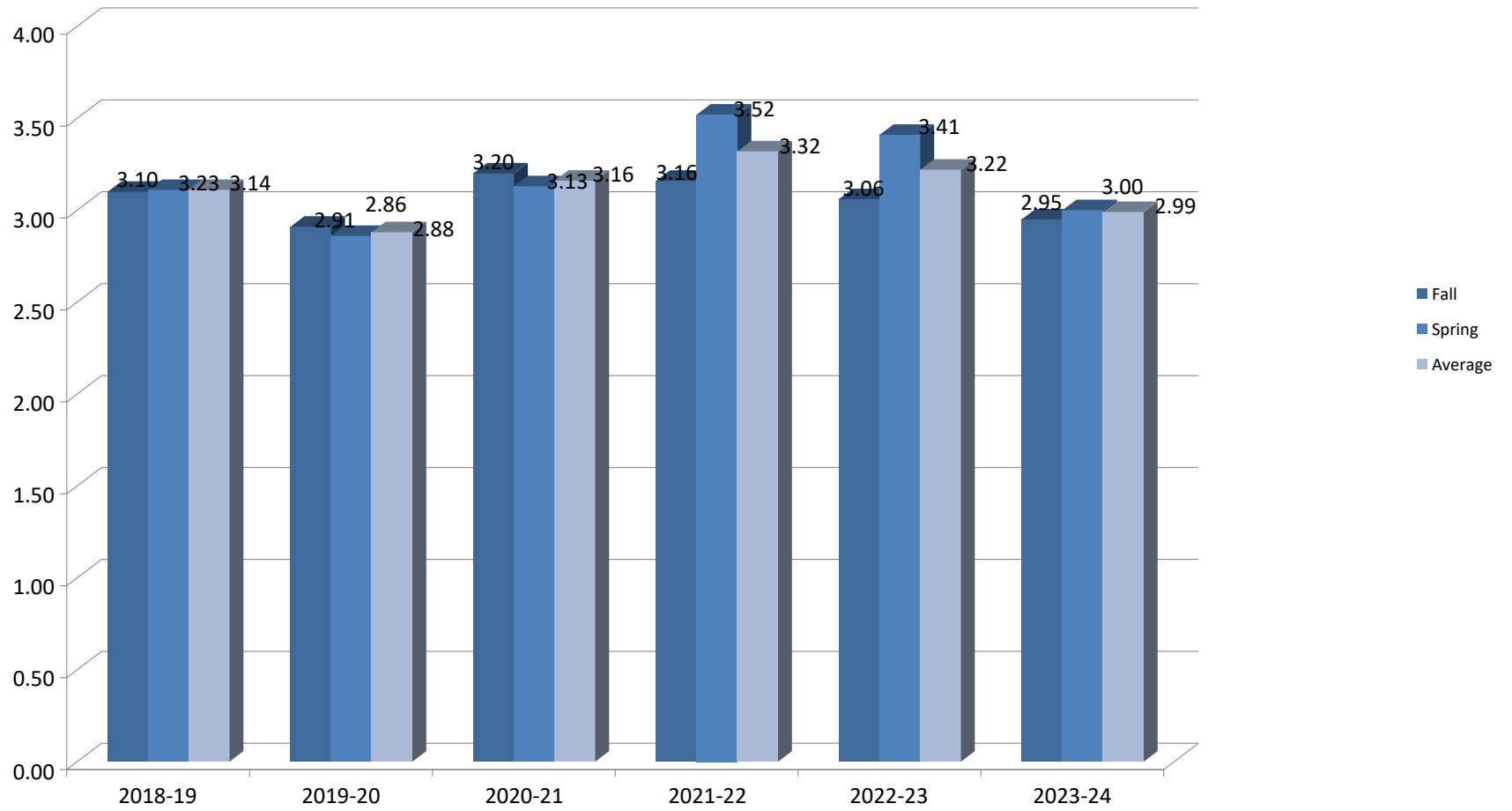
Men's Soccer GPA



	Fall	Spring	Average
2018-19	2.74	2.67	2.71
2019-20	2.69	2.79	2.73
2020-21	2.76	2.81	2.78
2021-22	3.00	2.77	2.89
2022-23	2.61	2.60	2.61
2023-24	2.61	2.61	2.61

2012-13	1.70	2.59	2.15
2013-14	2.59	2.82	2.70
2014-15	2.79	2.75	2.77
2015-16	2.73	2.73	2.73
2016-17	2.55	2.88	2.71
2017-18	2.99	2.90	2.95

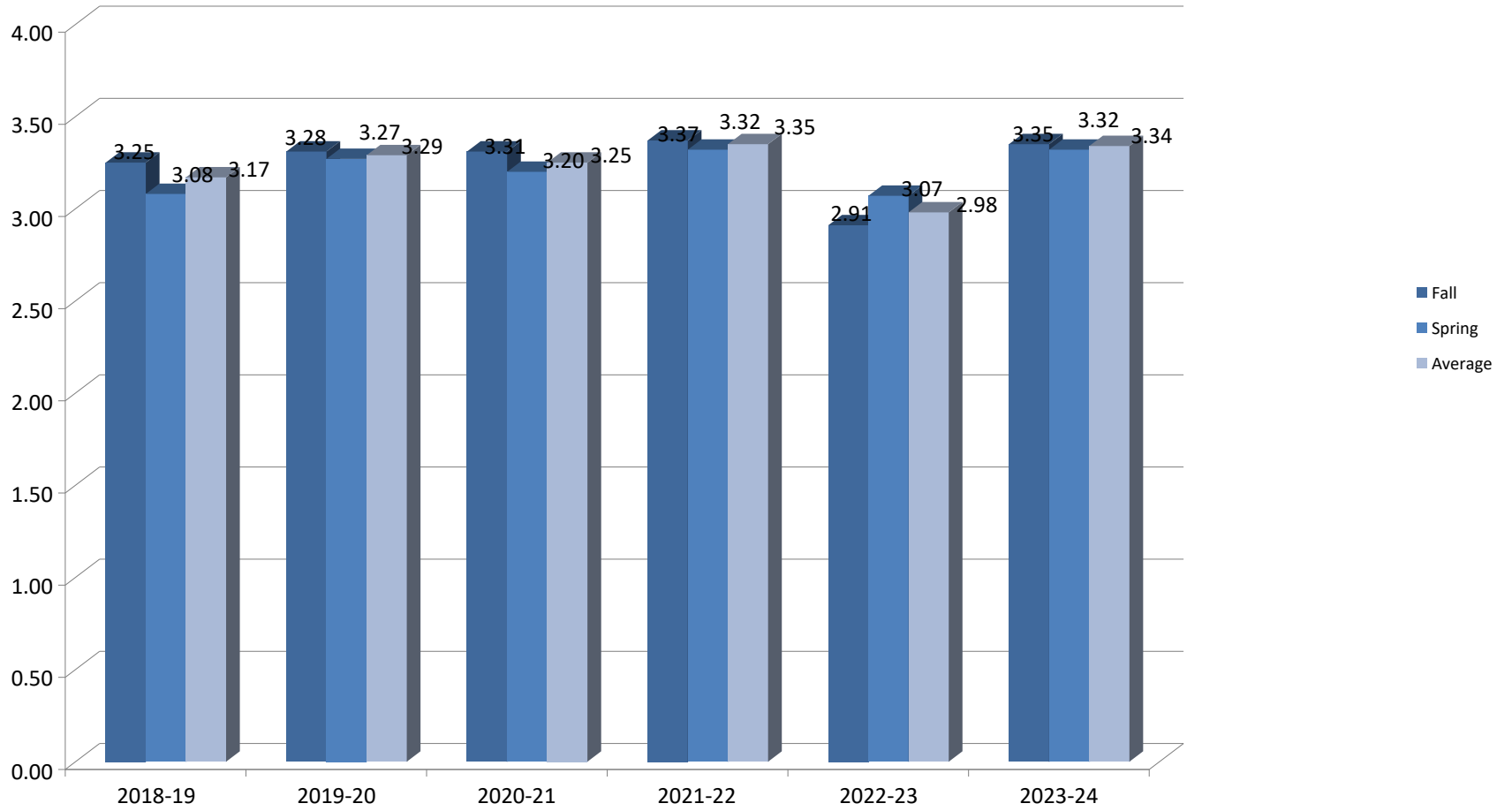
Women's Soccer GPA



	Fall	Spring	Average
2018-19	3.10	3.11	3.11
2019-20	2.91	2.86	2.88
2020-21	3.20	3.13	3.16
2021-22	3.16	3.52	3.32
2022-23	3.06	3.41	3.22
2023-24	2.95	3.00	2.99

2012-13	2.51	2.51	2.51
2013-14	3.07	3.14	3.10
2014-15	2.69	2.85	2.90
2015-16	3.04	3.11	3.07
2016-17	3.43	3.44	3.43
2017-18	2.92	3.13	3.03

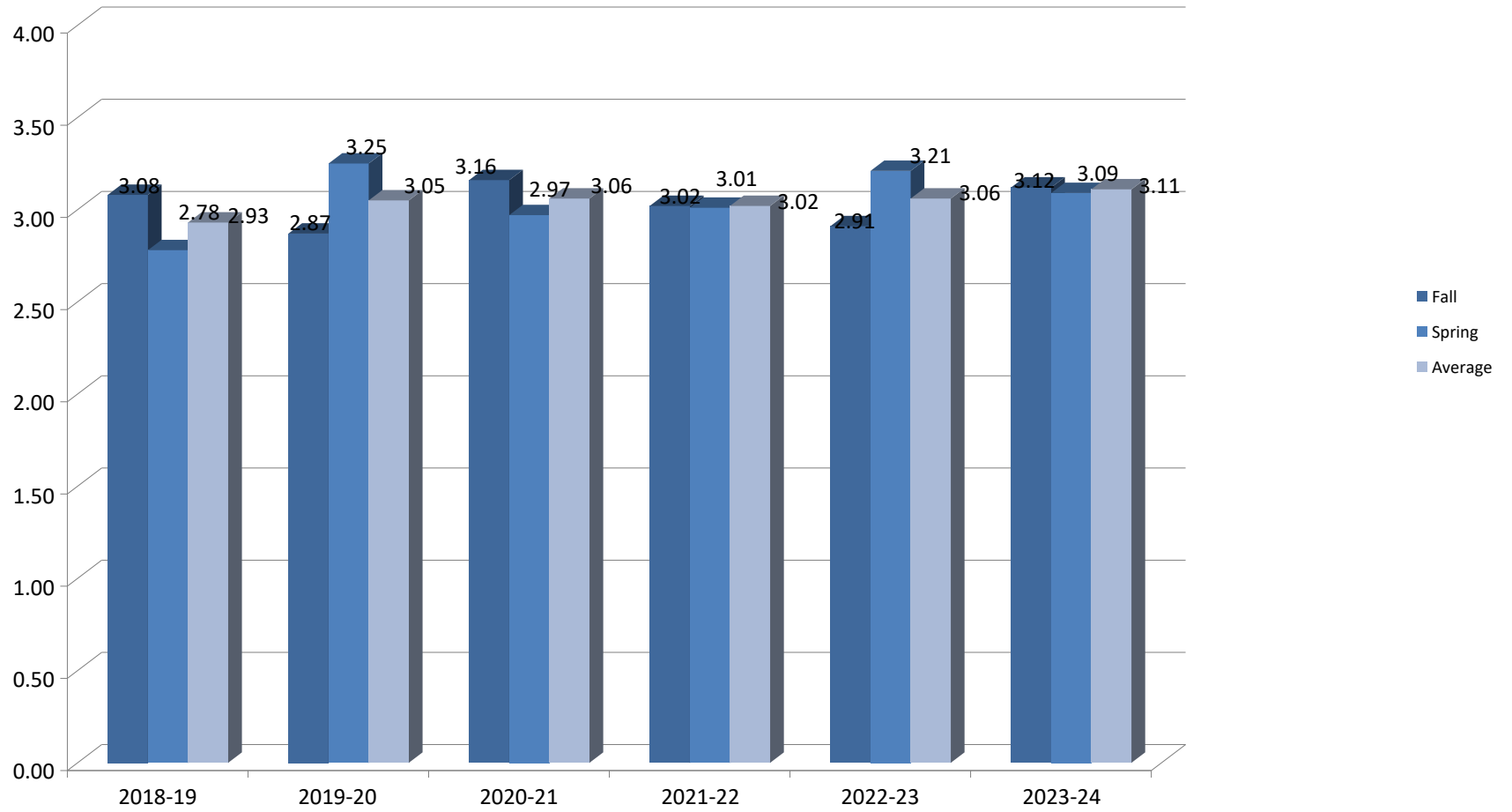
Softball GPA



	Fall	Spring	Average
2018-19	3.25	3.08	3.17
2019-20	3.31	3.27	3.29
2020-21	3.31	3.20	3.25
2021-22	3.37	3.32	3.35
2022-23	2.91	3.07	2.98
2023-24	3.35	3.32	3.34

2012-13	2.98	3.10	3.04
2013-14	3.07	3.26	3.16
2014-15	3.27	3.22	3.24
2015-16	3.49	3.38	3.43
2016-17	3.42	3.16	3.29
2017-18	3.20	3.11	3.16

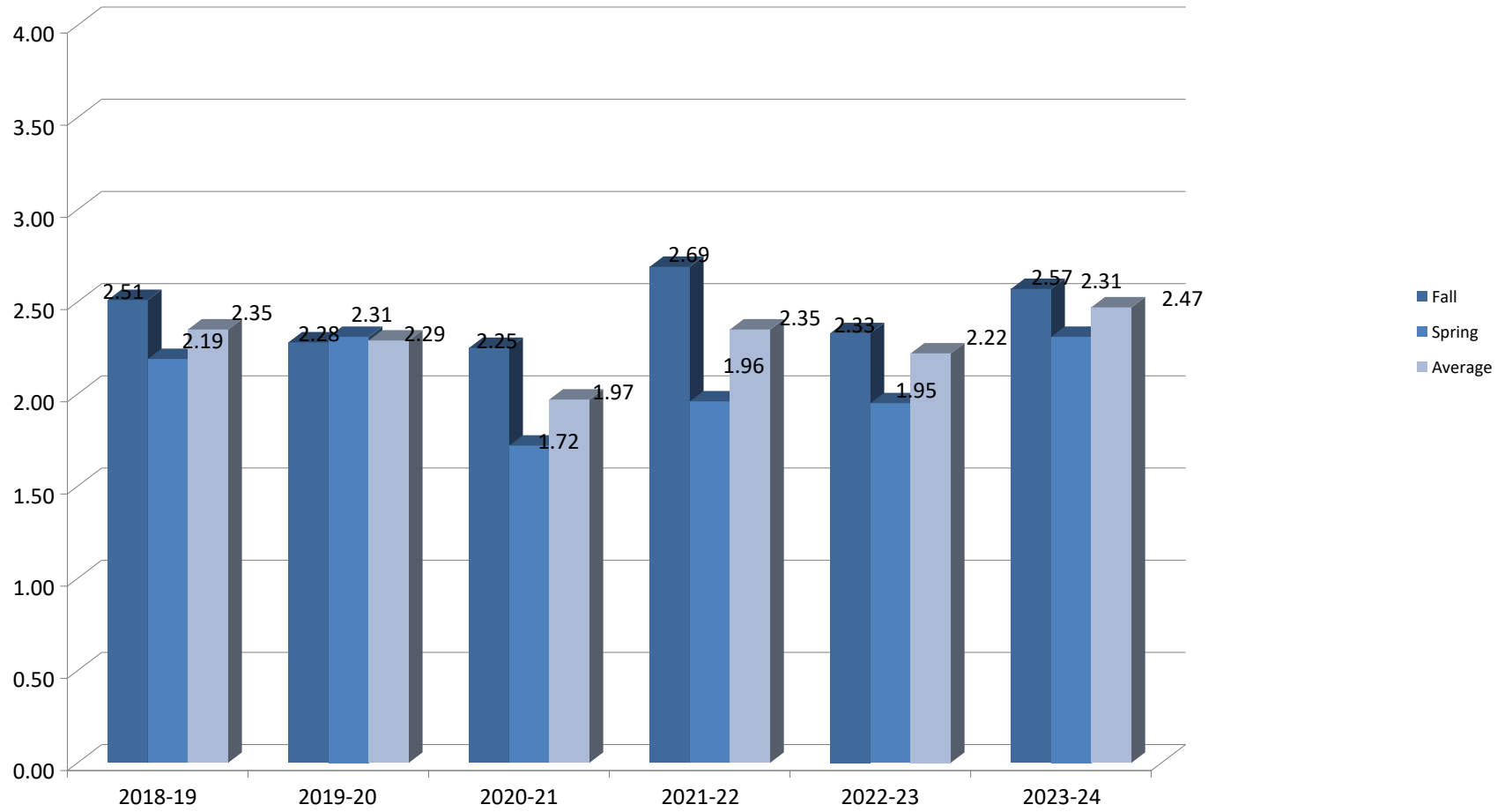
Women's Volleyball GPA



	Fall	Spring	Average
2018-19	3.08	2.78	2.93
2019-20	2.87	3.25	3.05
2020-21	3.16	2.97	3.06
2021-22	3.02	3.01	3.02
2022-23	2.91	3.21	3.06
2023-24	3.12	3.09	3.11

2012-13	3.02	3.21	3.12
2013-14	2.97	2.95	2.96
2014-15	2.97	2.91	2.94
2015-16	3.10	2.88	2.99
2016-17	2.90	2.98	2.94
2017-18	2.96	3.07	3.01

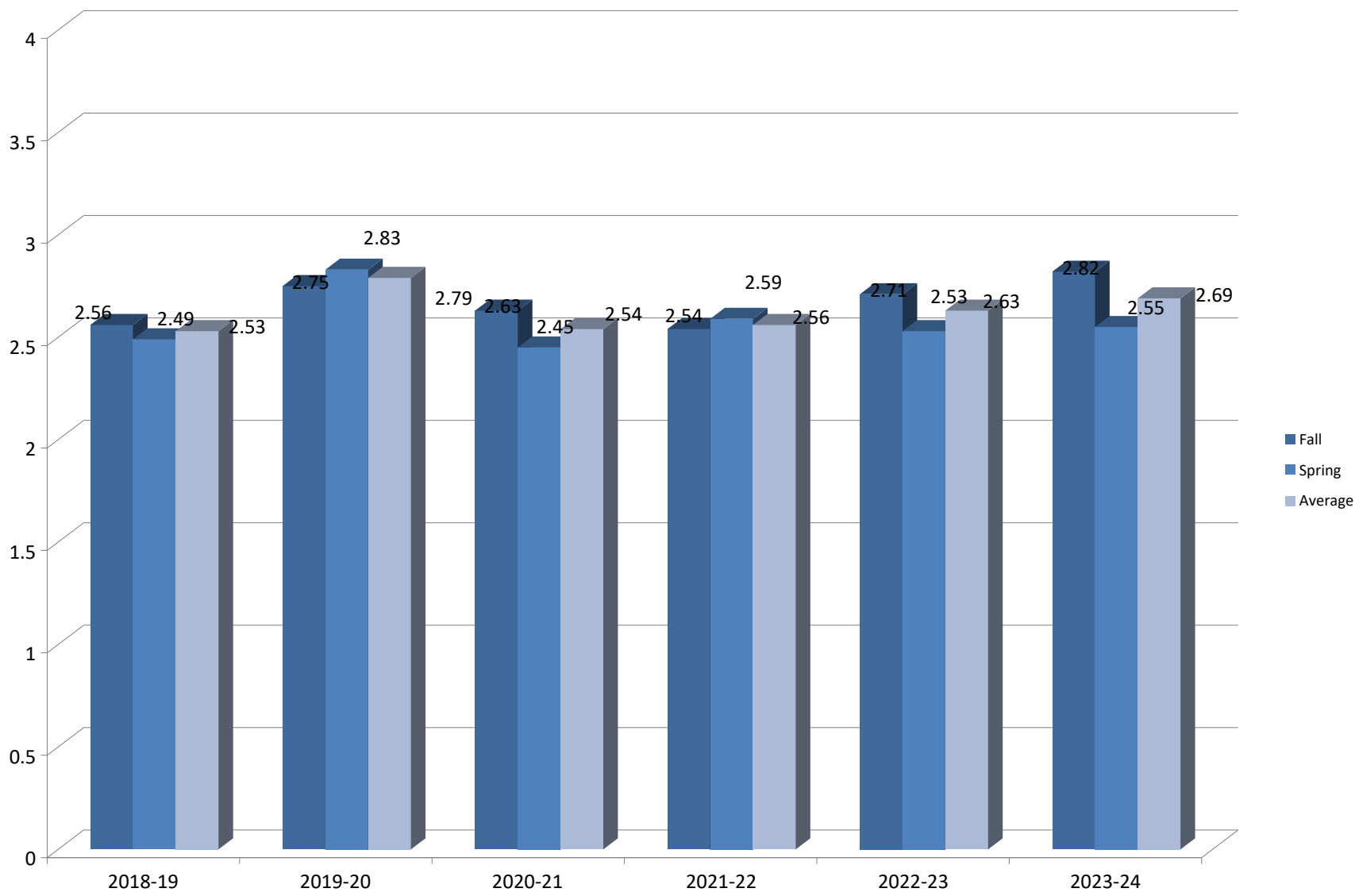
Men's Wrestling GPA



	Fall	Spring	Average
2018-19	2.51	2.19	2.35
2019-20	2.28	2.31	2.29
2020-21	2.25	1.72	1.97
2021-22	2.69	1.96	2.35
2022-23	2.33	1.95	2.22
2023-24	2.57	2.31	2.47

2012-13	2.83	2.55	2.69
2013-14	2.53	2.49	2.51
2014-15	2.60	2.28	2.44
2015-16	2.57	2.49	2.53
2016-17	2.56	2.29	2.42
2017-18	2.35	2.13	2.24

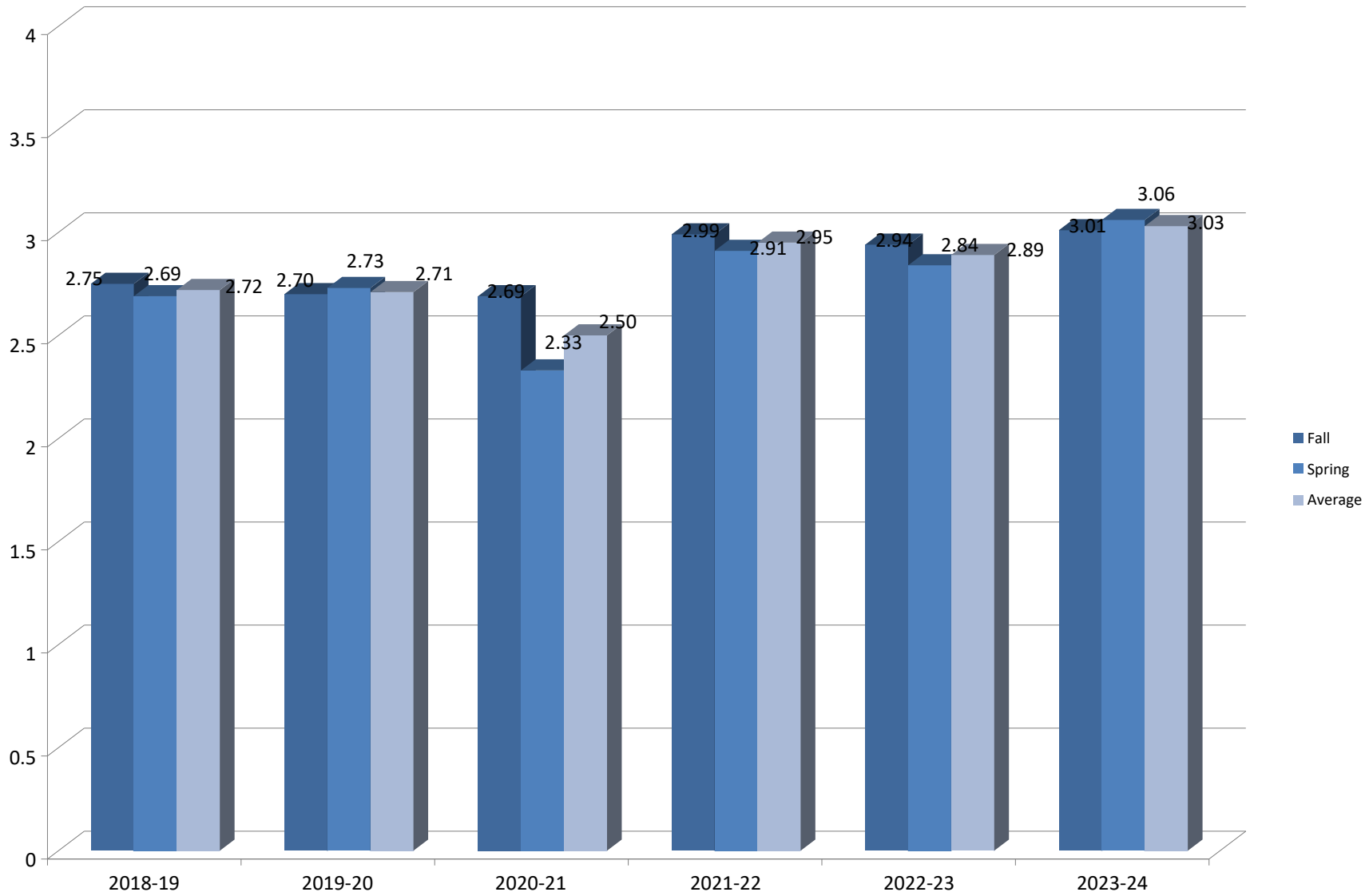
Cheer Squad GPA



	Fall	Spring	Average
2018-19	2.56	2.49	2.53
2019-20	2.75	2.83	2.79
2020-21	2.63	2.45	2.54
2021-22	2.54	2.59	2.56
2022-23	2.71	2.53	2.63
2023-24	2.82	2.55	2.69

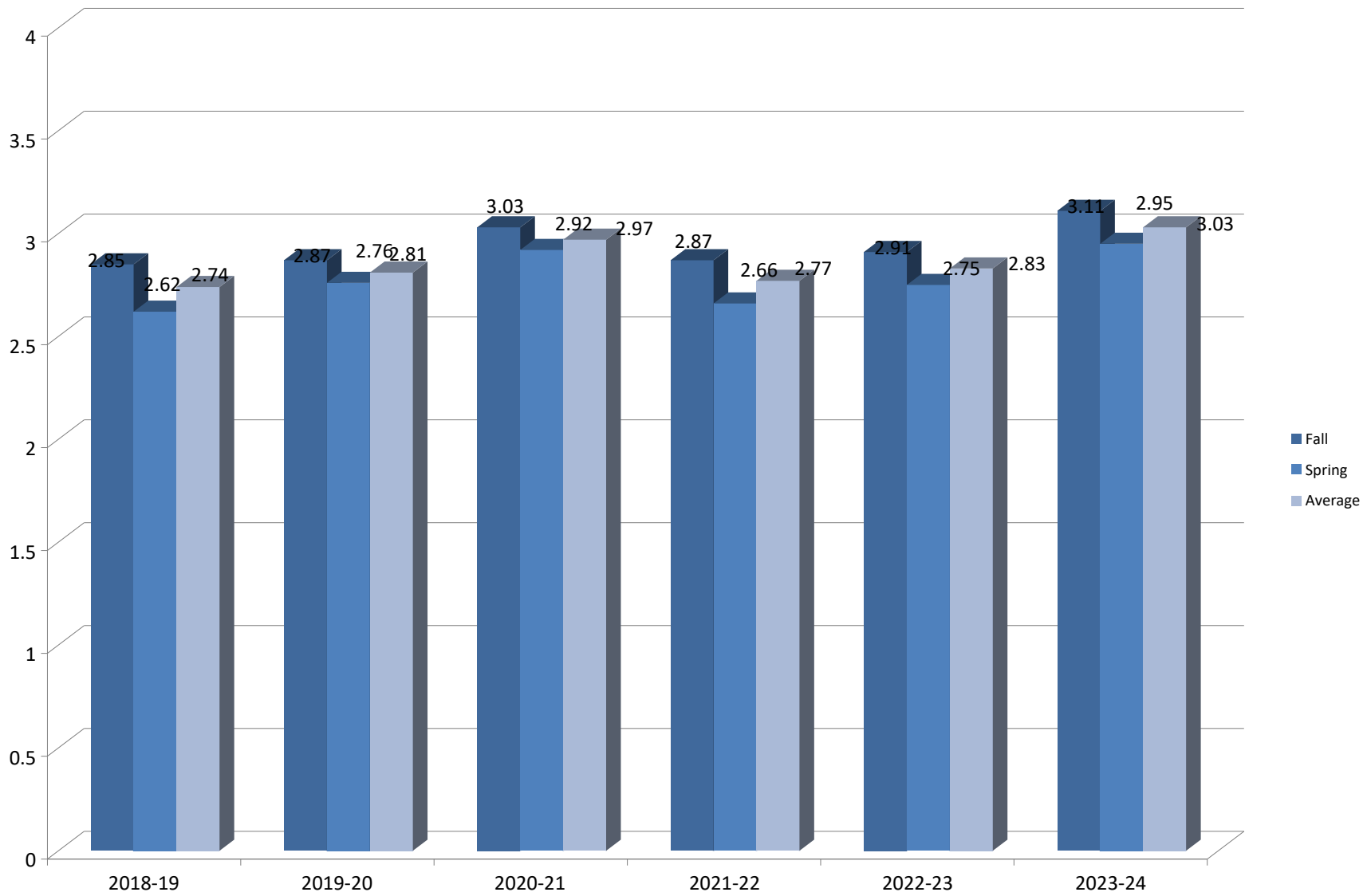
2012-13	3.03	2.96	3.00
2013-14	2.76	2.72	2.74
2014-15	2.87	2.66	2.76
2015-16	2.91	2.77	2.85
2016-17	2.87	2.49	2.68
2017-18	2.73	2.60	2.67

Rodeo GPA



	Fall	Spring	Average
2018-19	2.75	2.69	2.72
2019-20	2.70	2.73	2.71
2020-21	2.69	2.33	2.50
2021-22	2.99	2.91	2.95
2022-23	2.94	2.84	2.89
2023-24	3.01	3.06	3.03
2012-13	2.69	2.55	2.62
2013-14	2.93	3.13	3.03
2014-15	2.84	2.94	2.89
2015-16	2.95	2.83	2.89
2016-17	2.86	2.74	2.80
2017-18	3.04	3.02	3.03

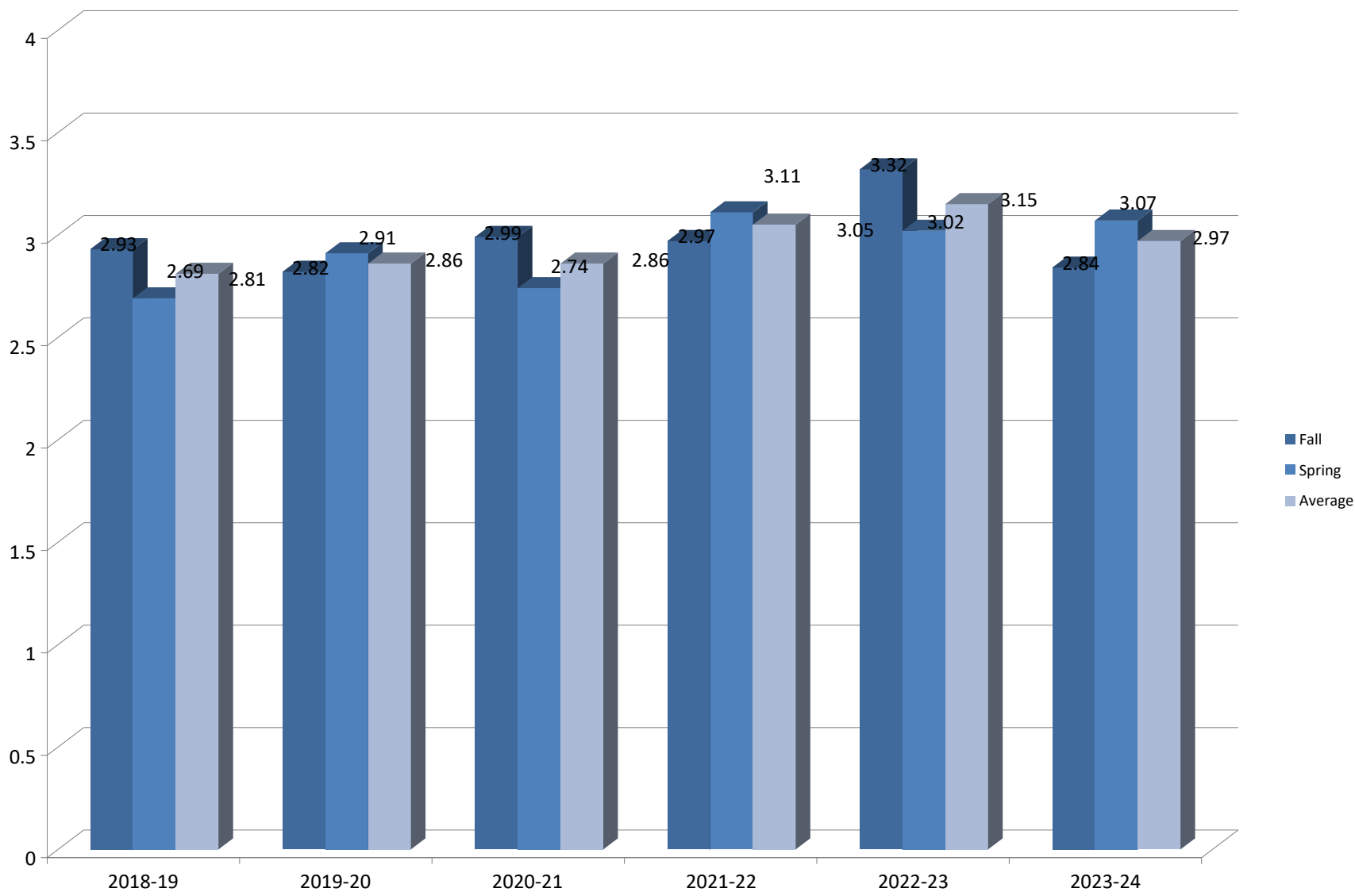
Men's Track & Field GPA



	Fall	Spring	Average
2018-19	2.85	2.62	2.74
2019-20	2.87	2.76	2.81
2020-21	3.03	2.92	2.97
2021-22	2.87	2.66	2.77
2022-23	2.91	2.75	2.83
2023-24	3.11	2.95	3.03

2012-13	2.22	2.09	2.15
2013-14	2.84	2.49	2.66
2014-15	2.49	2.36	2.42
2015-16	2.85	2.36	2.60
2016-17	2.54	2.45	2.49
2017-18	2.62	2.62	2.62

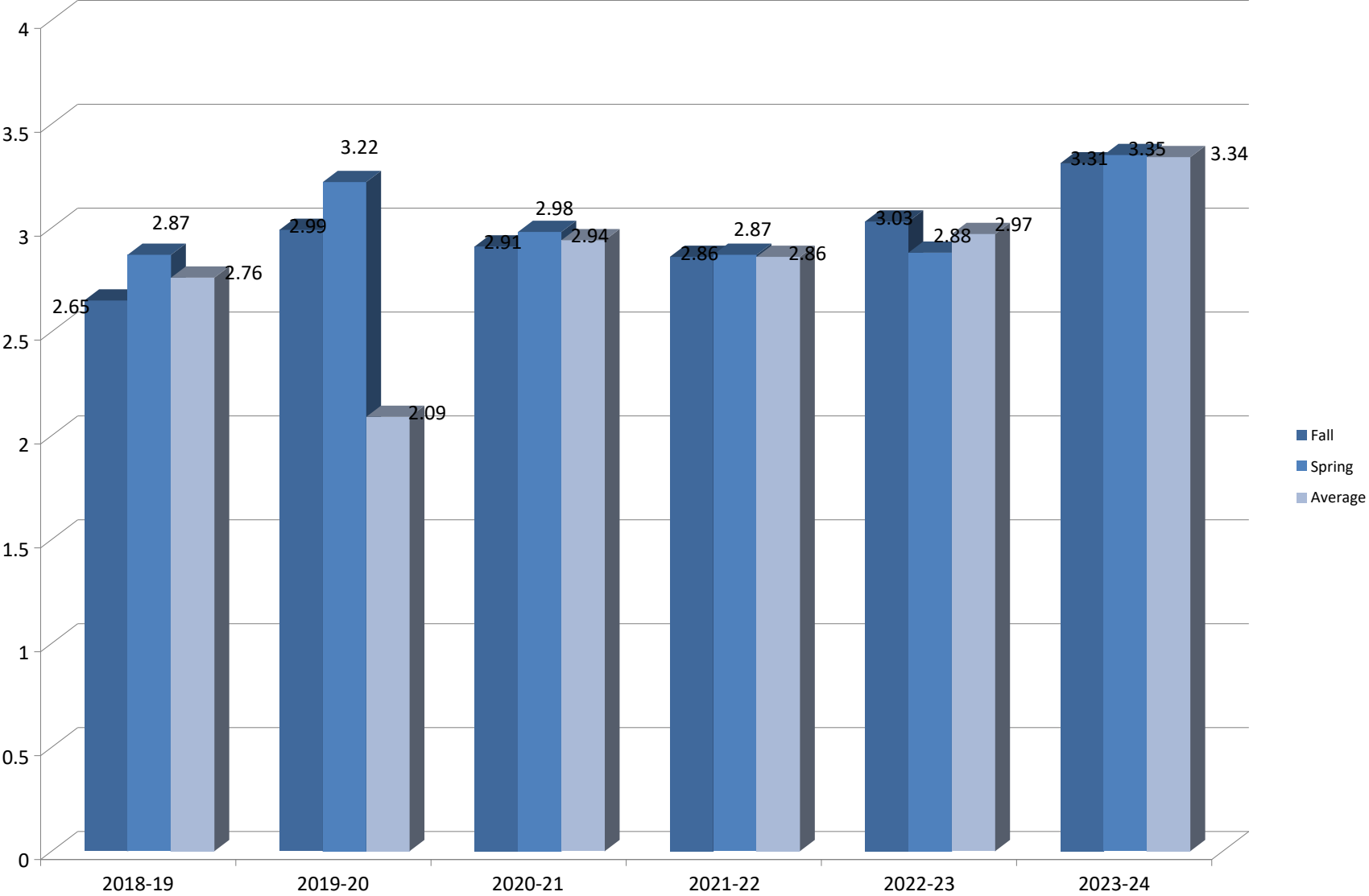
Women's Track & Field GPA



	Fall	Spring	Average
2018-19	2.93	2.69	2.81
2019-20	2.82	2.91	2.86
2020-21	2.99	2.74	2.86
2021-22	2.97	3.11	3.05
2022-23	3.32	3.02	3.15
2023-24	2.84	3.07	2.97

2012-13	2.43	2.27	2.53
2013-14	3.08	2.89	2.98
2014-15	2.71	2.63	2.67
2015-16	2.86	2.48	2.67
2016-17	2.28	2.57	2.42
2017-18	2.80	2.78	2.79

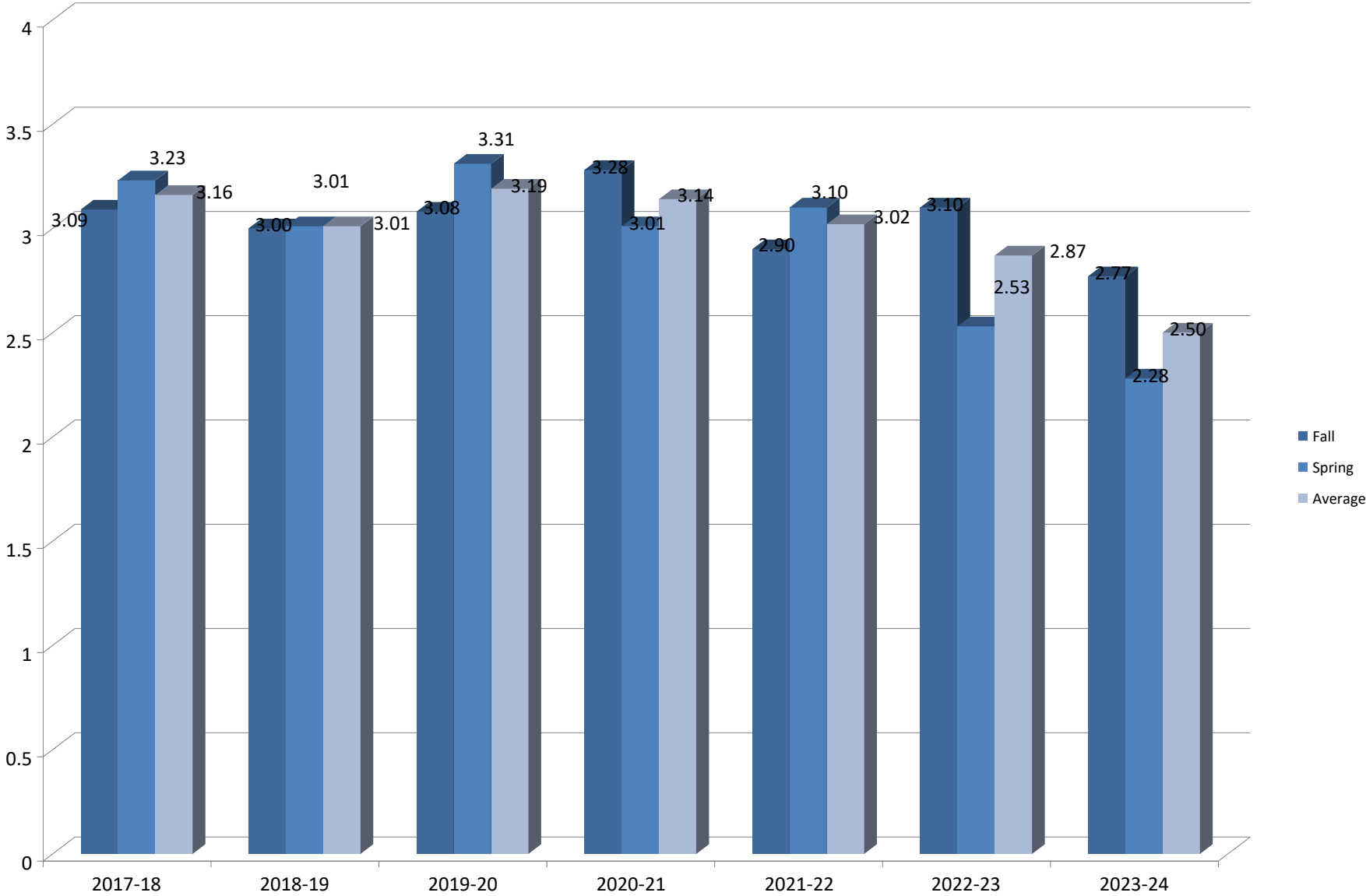
Men's Cross Country GPA



	Fall	Spring	Average
2018-19	2.65	2.87	2.76
2019-20	2.99	3.22	2.09
2020-21	2.91	2.98	2.94
2021-22	2.86	2.87	2.86
2022-23	3.03	2.88	2.97
2023-24	3.31	3.35	3.34

2012-13	2.97	2.65	2.80
2013-14	3.16	2.86	3.01
2014-15	3.22	3.00	3.11
2015-16	3.17	2.86	3.01
2016-17	2.73	2.73	2.73
2017-18	2.69	2.68	2.69

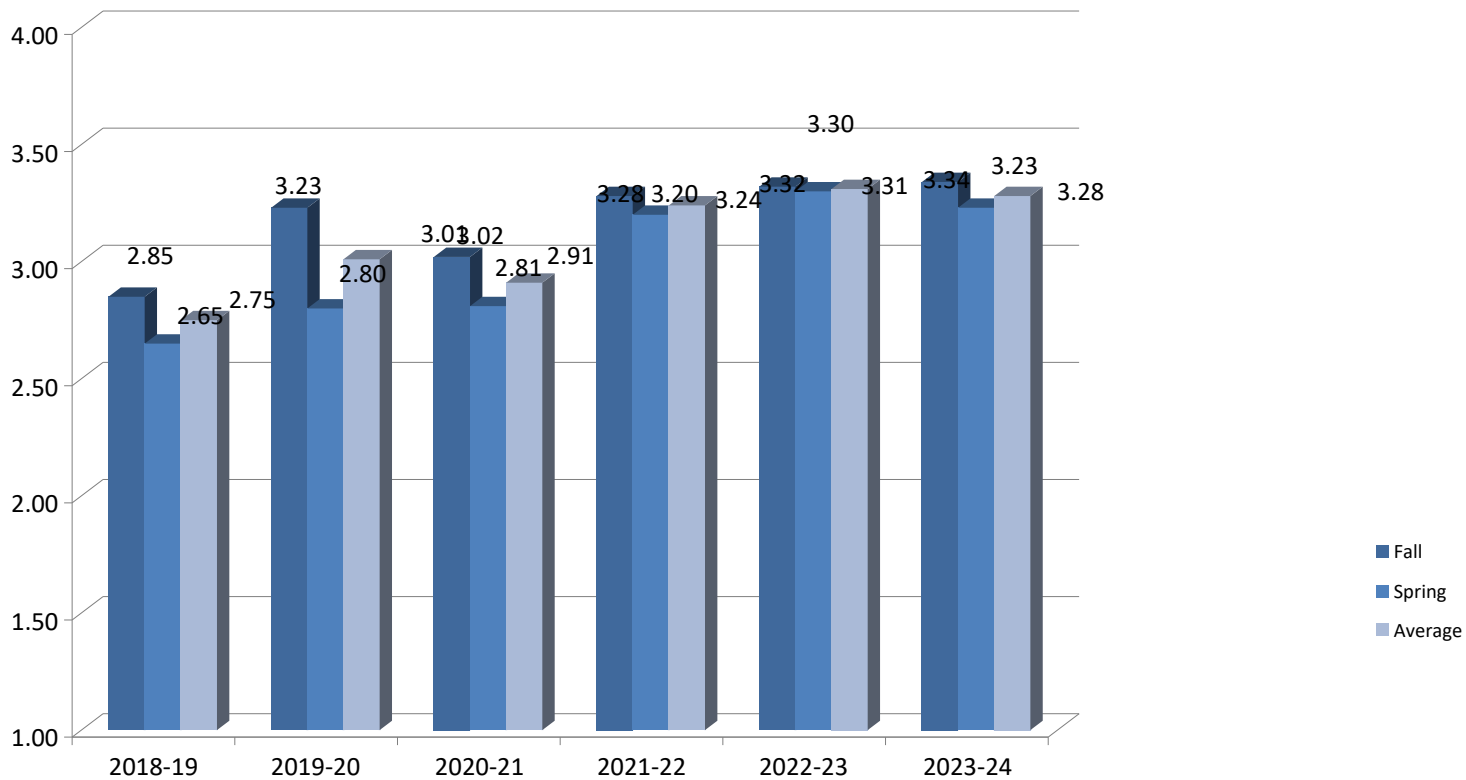
Women's Cross Country GPA



	Fall	Spring	Average
2017-18	3.09	3.23	3.16
2018-19	3.00	3.01	3.01
2019-20	3.08	3.31	3.19
2020-21	3.28	3.01	3.14
2021-22	2.90	3.10	3.02
2022-23	3.10	2.53	2.87
2023-24	2.77	2.28	2.50

2012-13	3.18	3.31	3.25
2013-14	3.09	3.47	3.28
2014-15	3.31	3.13	3.22
2015-16	3.32	2.90	3.11
2016-17	3.02	3.15	3.08

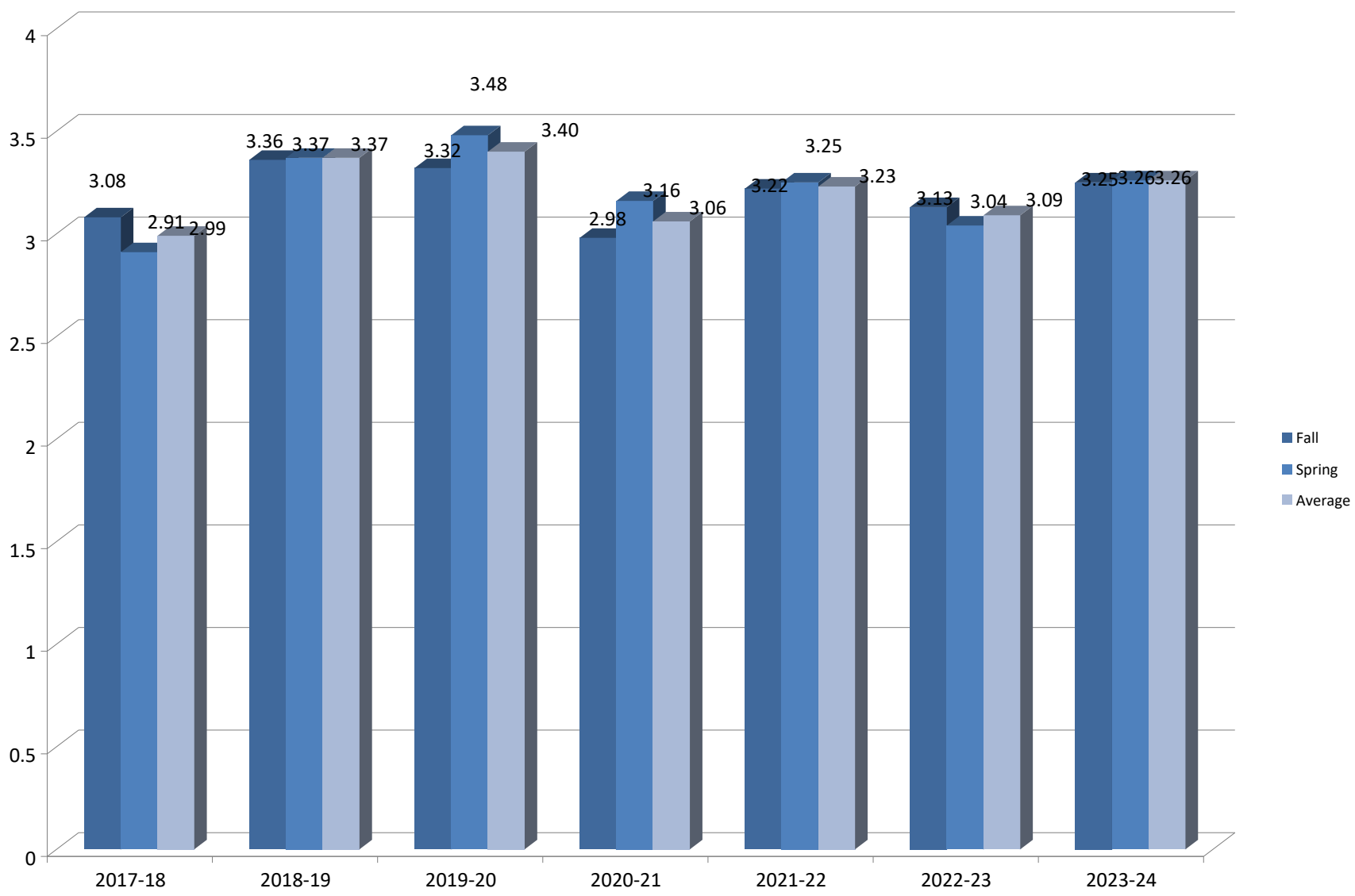
Men's Bowling GPA



	Fall	Spring	Average
2018-19	2.85	2.65	2.75
2019-20	3.23	2.80	3.01
2020-21	3.02	2.81	2.91
2021-22	3.28	3.20	3.24
2022-23	3.32	3.30	3.31
2023-24	3.34	3.23	3.28

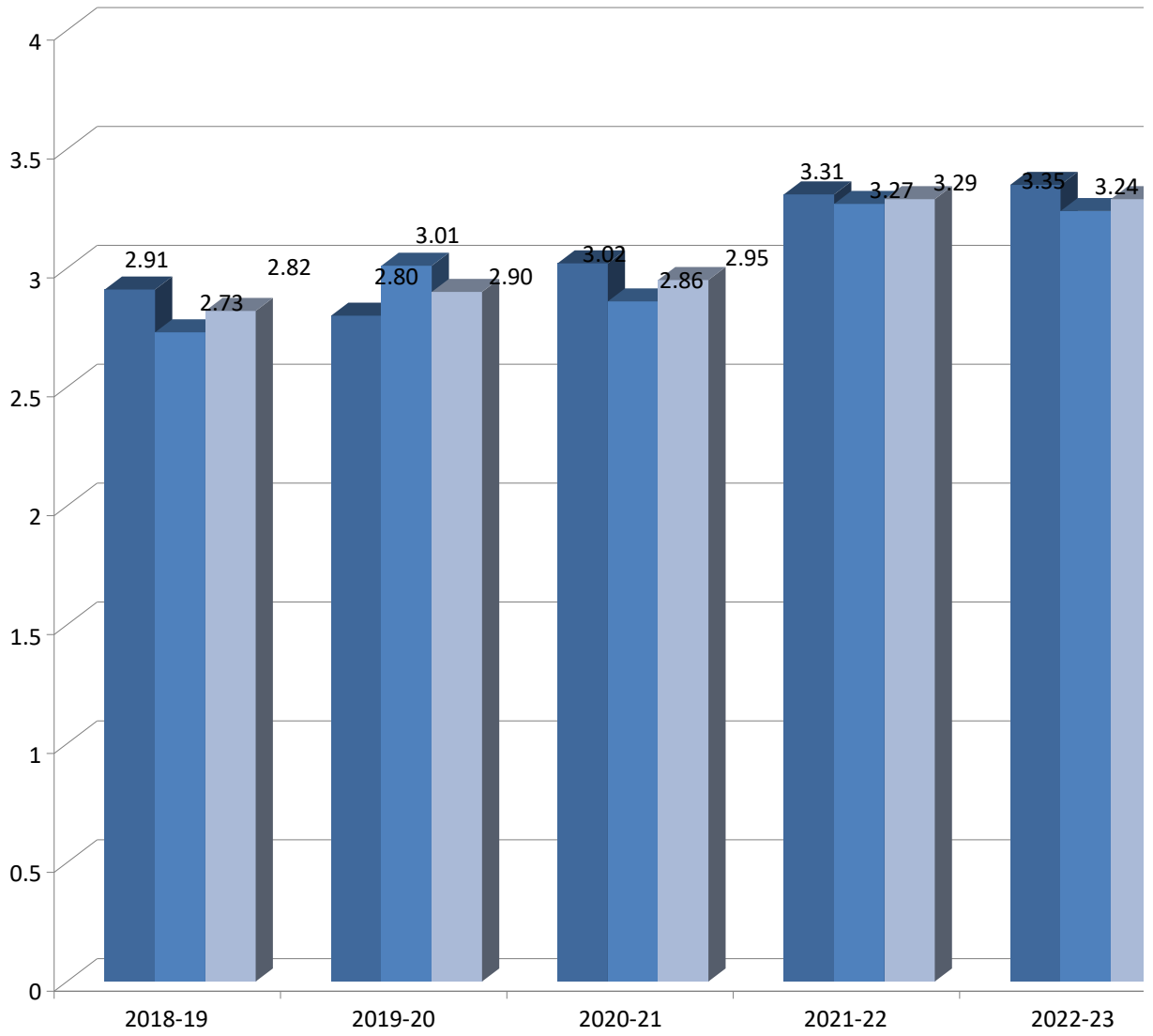
2012-13	2.82	2.78	2.80
2013-14	2.81	2.56	2.68
2014-15	3.10	3.15	3.12
2015-16	3.37	3.12	3.24
2016-17	3.33	3.11	3.22
2017-18	2.77	2.99	2.88

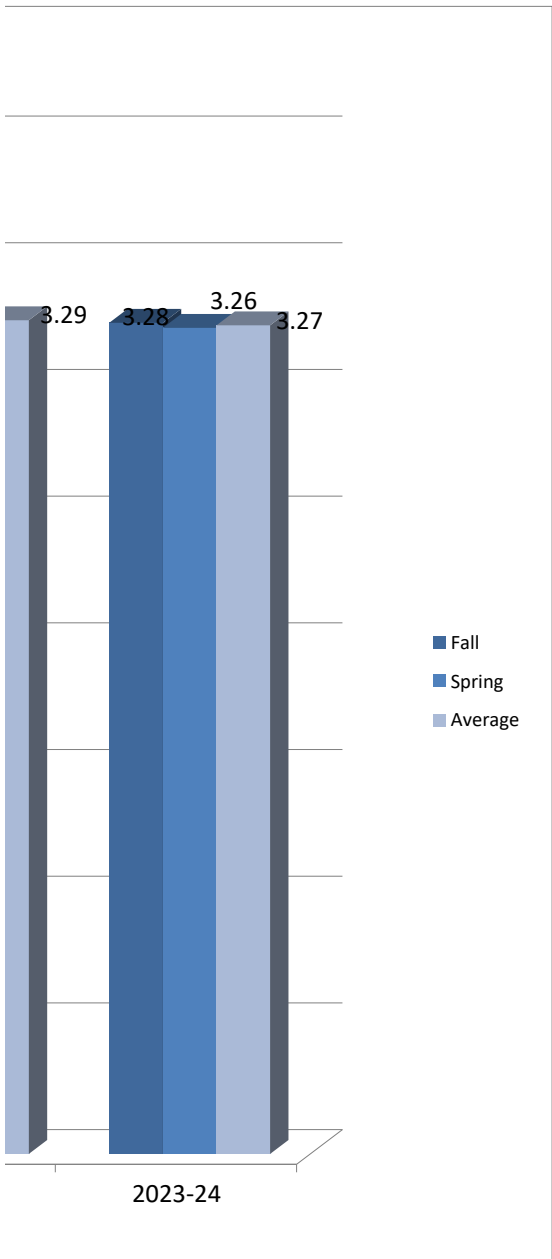
Women's Bowling GPA



	Fall	Spring	Average
2017-18	3.08	2.91	2.99
2018-19	3.36	3.37	3.37
2019-20	3.32	3.48	3.40
2020-21	2.98	3.16	3.06
2021-22	3.22	3.25	3.23
2022-23	3.13	3.04	3.09
2023-24	3.25	3.26	3.26
2012-13	3.16	2.87	3.02
2013-14	3.11	3.05	3.08
2014-15	2.93	3.63	3.28
2015-16	2.89	2.97	2.93
2016-17	3.33	2.56	2.94

Marching Band GPA





	Fall	Spring	Average
2018-19	2.91	2.73	2.82
2019-20	2.80	3.01	2.90
2020-21	3.02	2.86	2.95
2021-22	3.31	3.27	3.29
2022-23	3.35	3.24	3.29
2023-24	3.28	3.26	3.27

2012-13	3.02	2.91	2.96
2013-14	3.04	3.09	3.06
2014-15	2.84	2.75	2.79
2015-16	2.91	2.73	2.82
2016-17	2.82	2.71	2.76
2017-18	3.04	3.07	3.05